

MONTHLY MEMBERSHIP PROGRESS REPORT

LOCATION TEXAS

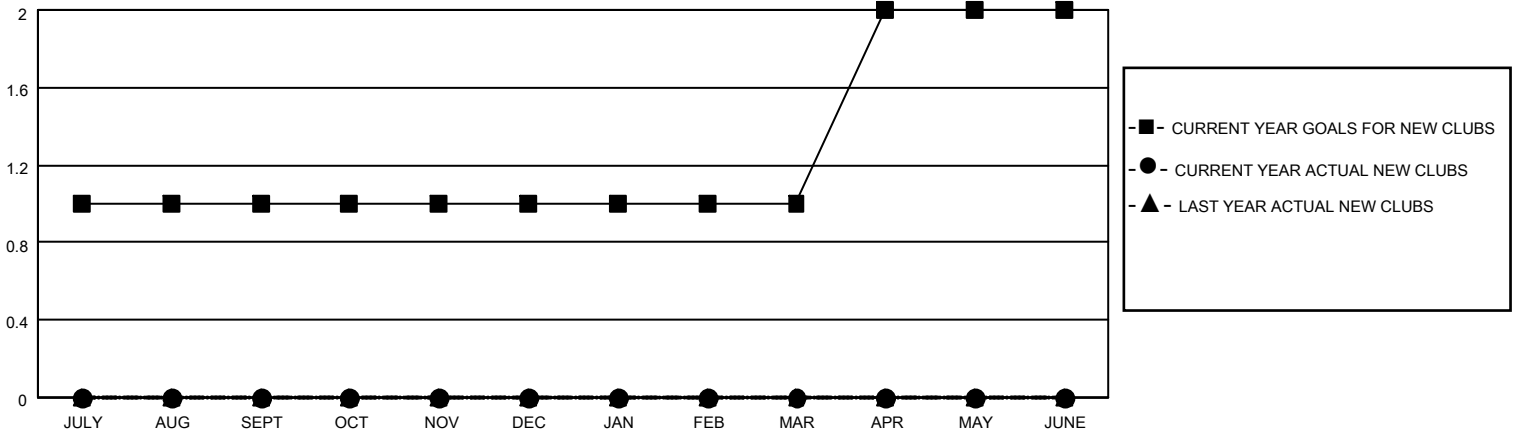
District 2 S5

Results as of: 6/30/2022

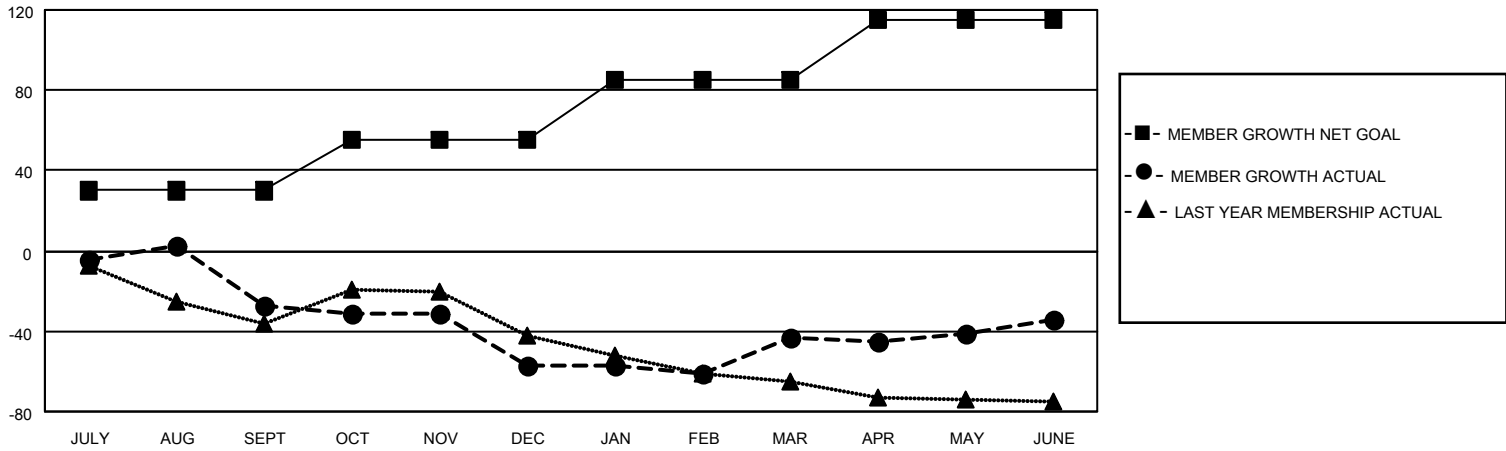
Clubs			
RESULTS FOR 2021-2022			
QUARTER	NEW CLUB GOAL	NEW CLUBS	DROPPED CLUBS
JULY/AUG/SEPT	1	0	2
OCT/NOV/DEC	0	0	1
JAN/FEB/MAR	0	0	1
APR/MAY/JUNE	1	0	0

Members			
RESULTS FOR 2021-2022			
QUARTER	MEMBER GROWTH NET GOAL	MEMBER GROWTH ACTUAL	DROPPED MEMBERS ACTUAL (including transfers)
JULY/AUG/SEPT	30	73	89
OCT/NOV/DEC	25	75	96
JAN/FEB/MAR	30	80	61
APR/MAY/JUNE	30	110	93

GOALS AND ACTUAL NEW CLUBS CUMULATIVE



GOALS AND ACTUAL MEMBERS CUMULATIVE



DROPPED CLUBS: 4

44 CLUBS OF 59 ADDED 1 OR MORE NEW MEMBERS

GENDER DISTRIBUTION

MALE	1,351 (59.07%)
FEMALE	936 (40.93%)
NON BINARY	0 (0.00%)
PREFER NOT TO ANSWER	0 (0.00%)

DROPPED MEMBERS

[CLICK HERE FOR CUMULATIVE MEMBERSHIP DATA](#)

DECEASED	28
CLUB CANCELLED	29
OTHER	282
TOTAL	339

TOTAL FAMILY UNIT MEMBERS	415
FAMILY MEMBERS PAYING HALF DUES	211